

JUL 18 1918

INT. 38

O. N. I. Publication No. 38

ILLUSTRATIONS  
OF  
SUBMARINES, TORPEDOES  
AND MINES

FOR INFORMATION OF SEAFARING MEN

REPORT ALL DISCOVERED

OFFICE OF NAVAL INTELLIGENCE

JUNE, 1918



WASHINGTON  
GOVERNMENT PRINTING OFFICE  
1918



## WARNING!

The accompanying illustrations show high-explosive mines, such as are being used by the Germans and other belligerent powers.

These mines when first put in place are so anchored that they are held at a certain distance below the surface of the water. It is intended that they shall remain invisible and be exploded when struck by any vessel that may come in contact with them. They are called submerged contact mines.

Such mines may be removed by various methods of dragging or sweeping, such as as by sinking a long cable, each end of which is attached to a tug, and thus dragging a suspected locality. This should only be done by persons who have had experience in work of this nature.

If, due to stormy weather or for any other reason, a mine becomes detached from its anchor, as is often the case, it comes to the surface, and for an indefinite time may be carried about by various currents, and continues to be a danger to navigation, because of being as destructive afloat as submerged. Likewise, floating mines are often cast upon the beach and should be carefully avoided.

Under any conditions whatever a mine floating, stranded, or anchored, should be approached only with the greatest caution. If possible the mine should be destroyed by rifle or gun fire.

It is very desirable that the kind of mine be determined by those who may discover it before they destroy it or leave the vicinity; that is, whether it is of English, French, or



German make. It is for this purpose, as well as to caution all seafaring people, that this pamphlet is being distributed.

If, under very favorable conditions of weather, it is possible to approach a floating mine in an effort to identify it, the greatest care must be exercised not to do so when any other floating object is likely to touch it, and not to permit any part of your own vessel to come in contact with it. A floating mine is generally harmless unless it touches some other object.

If an attempt is to be made to destroy a mine by gunfire, those who have not had actual experience in such work should not open fire at a shorter range than 200 yards.

Whether or not an attempt be made to destroy a mine, the fact of its discovery and a report of all circumstances in the matter should be made to the Hydrographic Office, the collector of any port, any officer of the Navy or the Army, or to any other Government officer at the earliest possible moment.

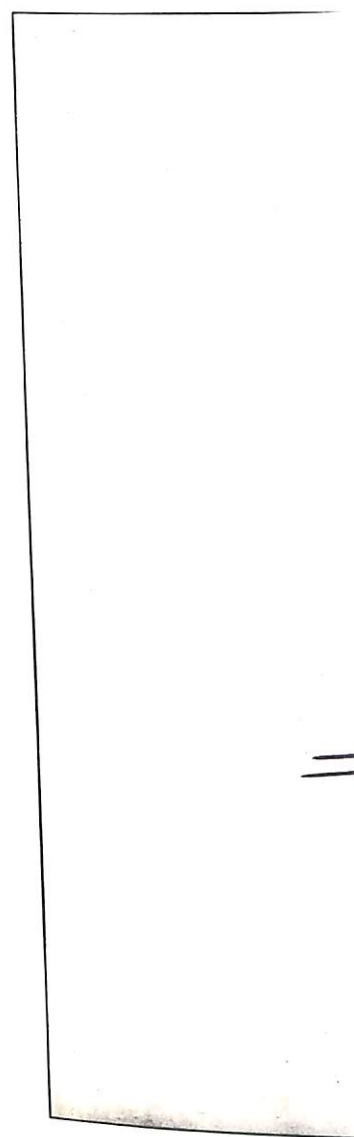
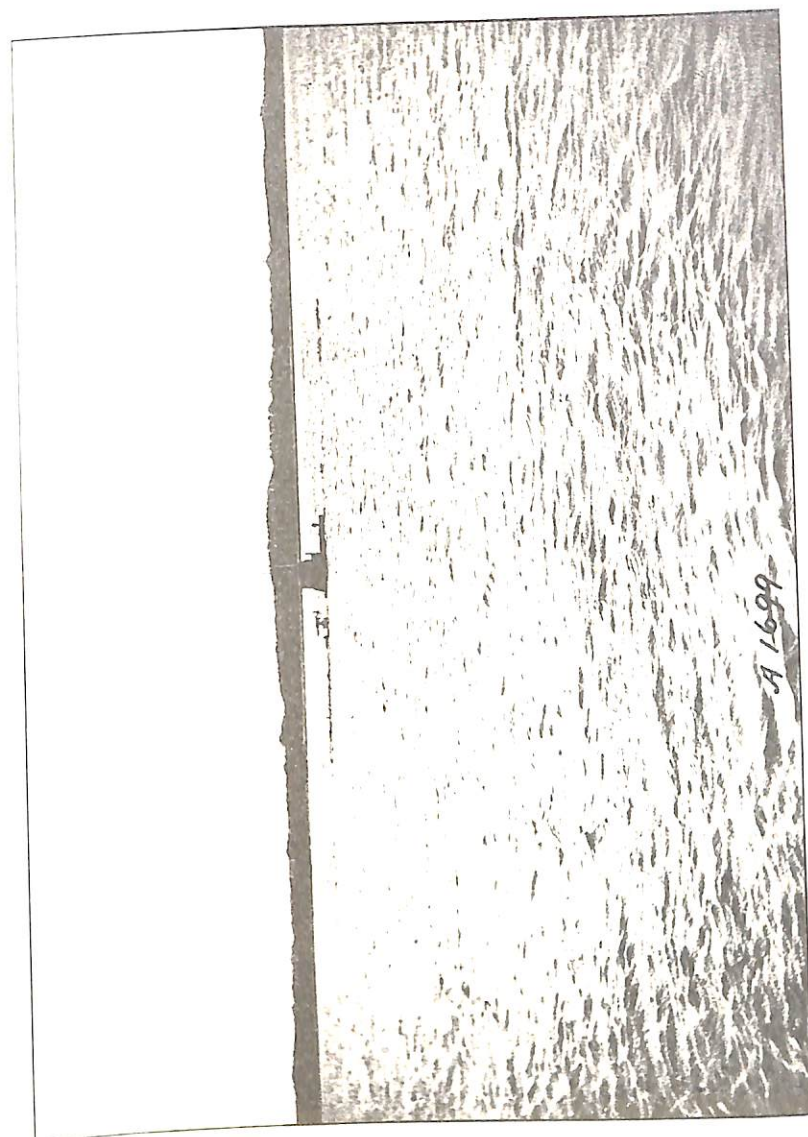
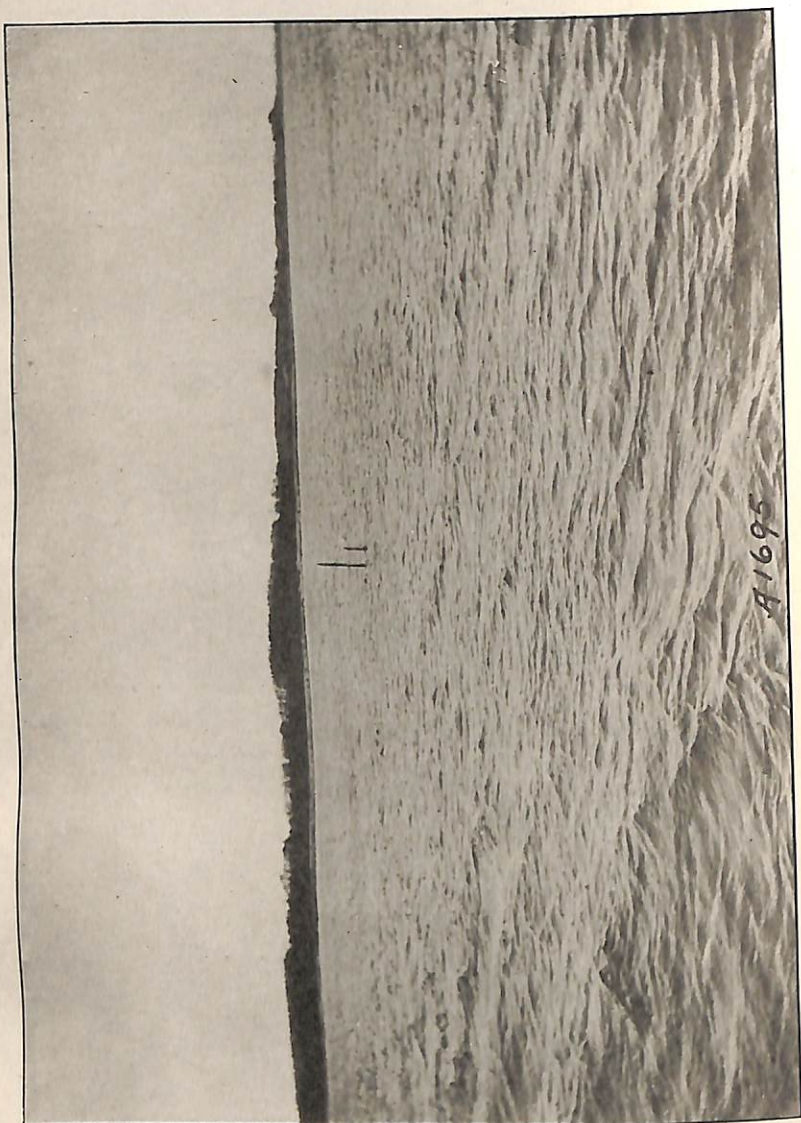
Report the presence of any floating object that may resemble a metal ball or cylinder in order that proper investigation may be made.

If all people along the coast or at sea keep always on the lookout and bear in mind these instructions, a great loss of life and property may be avoided and service of the greatest importance to the Government will be rendered.

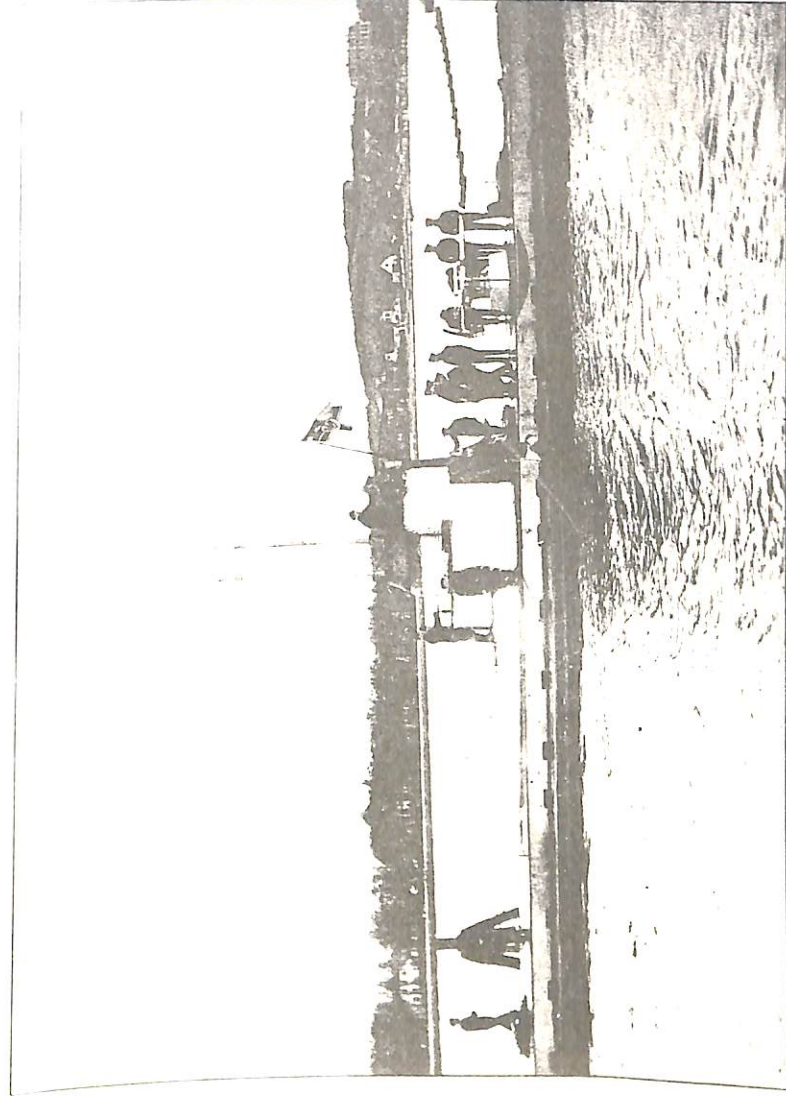
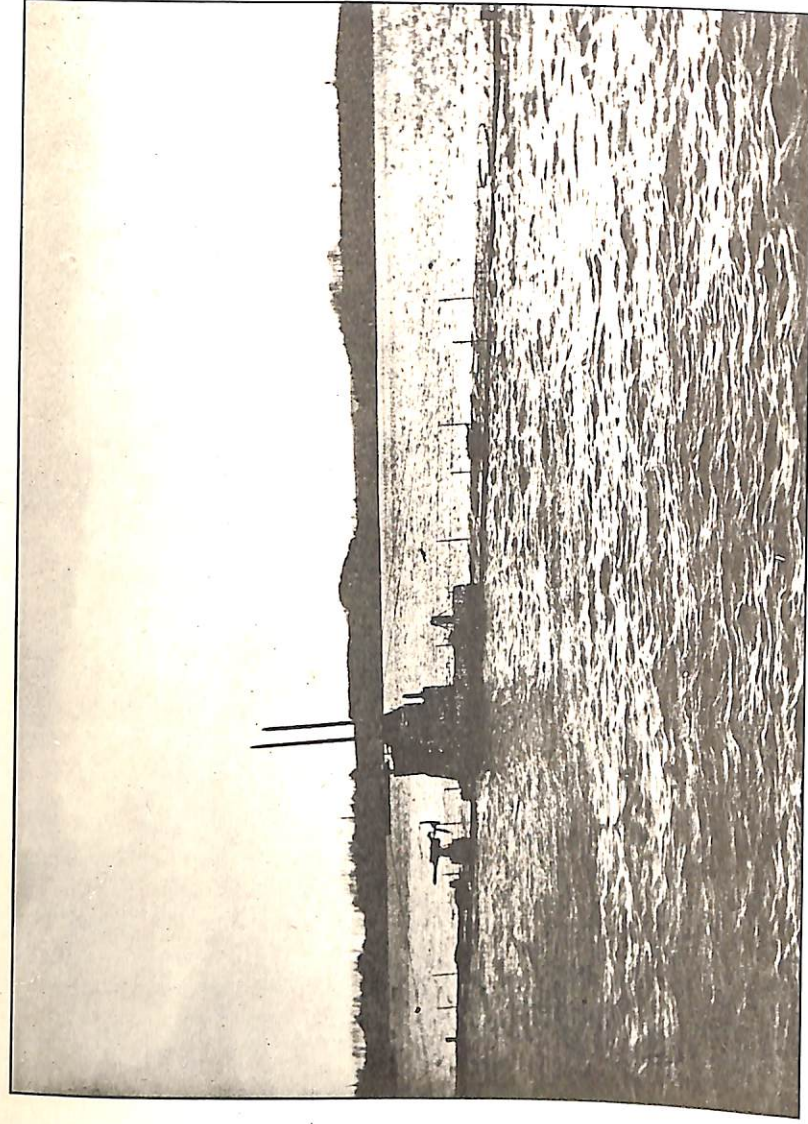
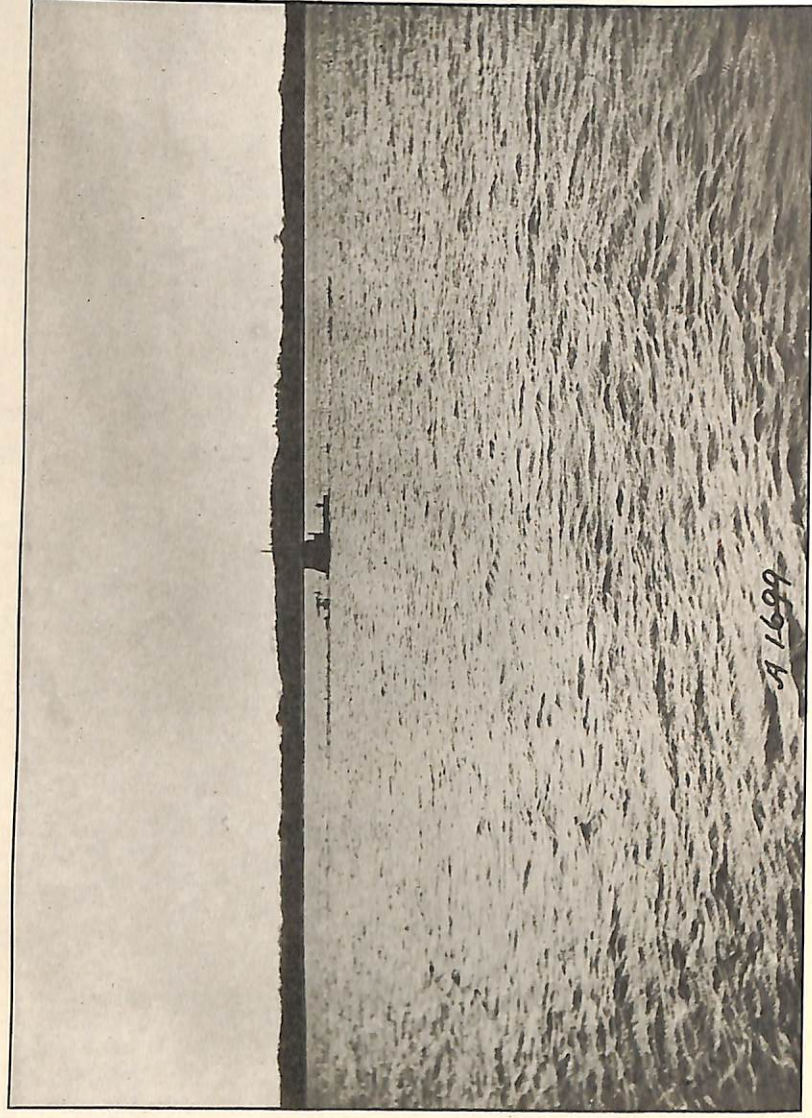


VIEW OF A SUBMARINE AT FIVE STAGES OF EMERGENCE.











Types of Mines.  
British and German.



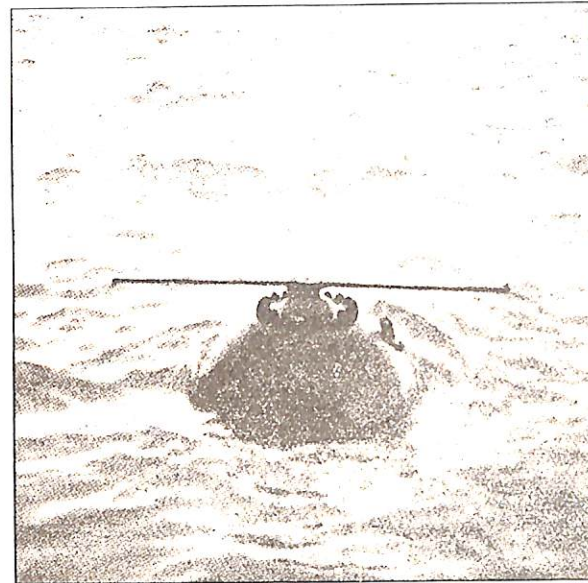
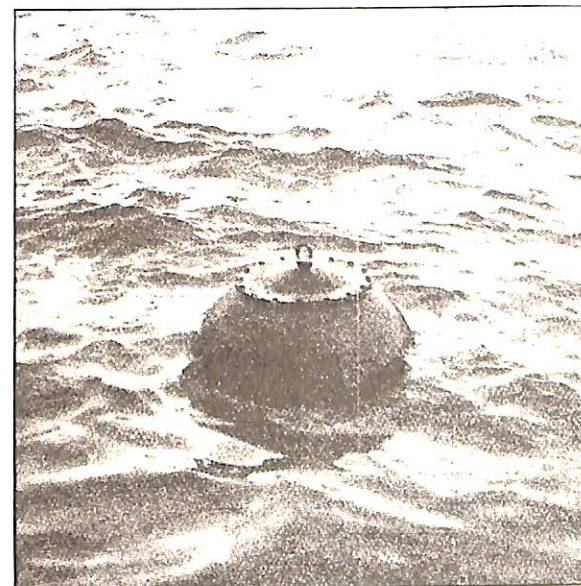
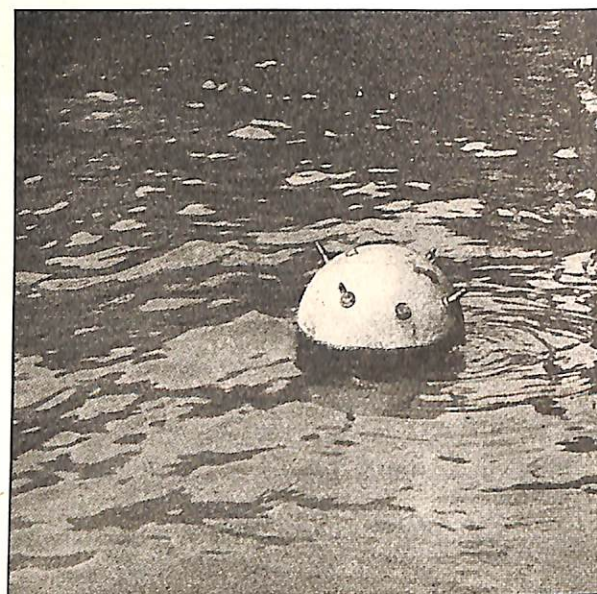


FIG. 1. THE SUBMERGIBLE, TYPE "A", IN THE WATER.

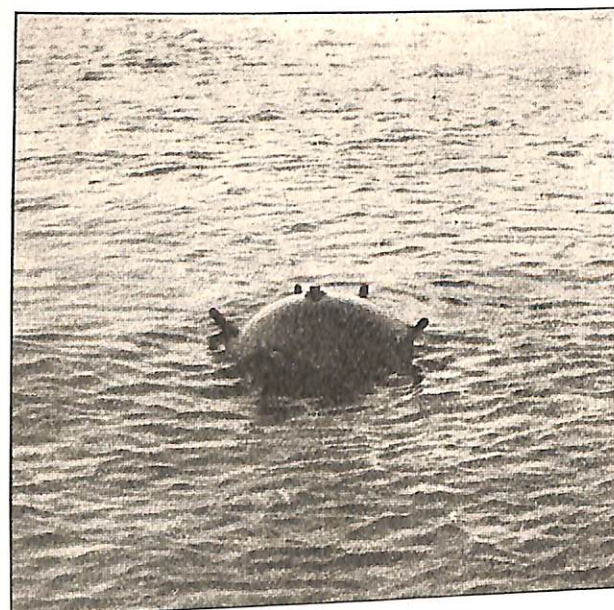


IN THIS TYPE THE HANDBLES ARE PLACED ON THE TOP OF THE SUBMERGIBLE.

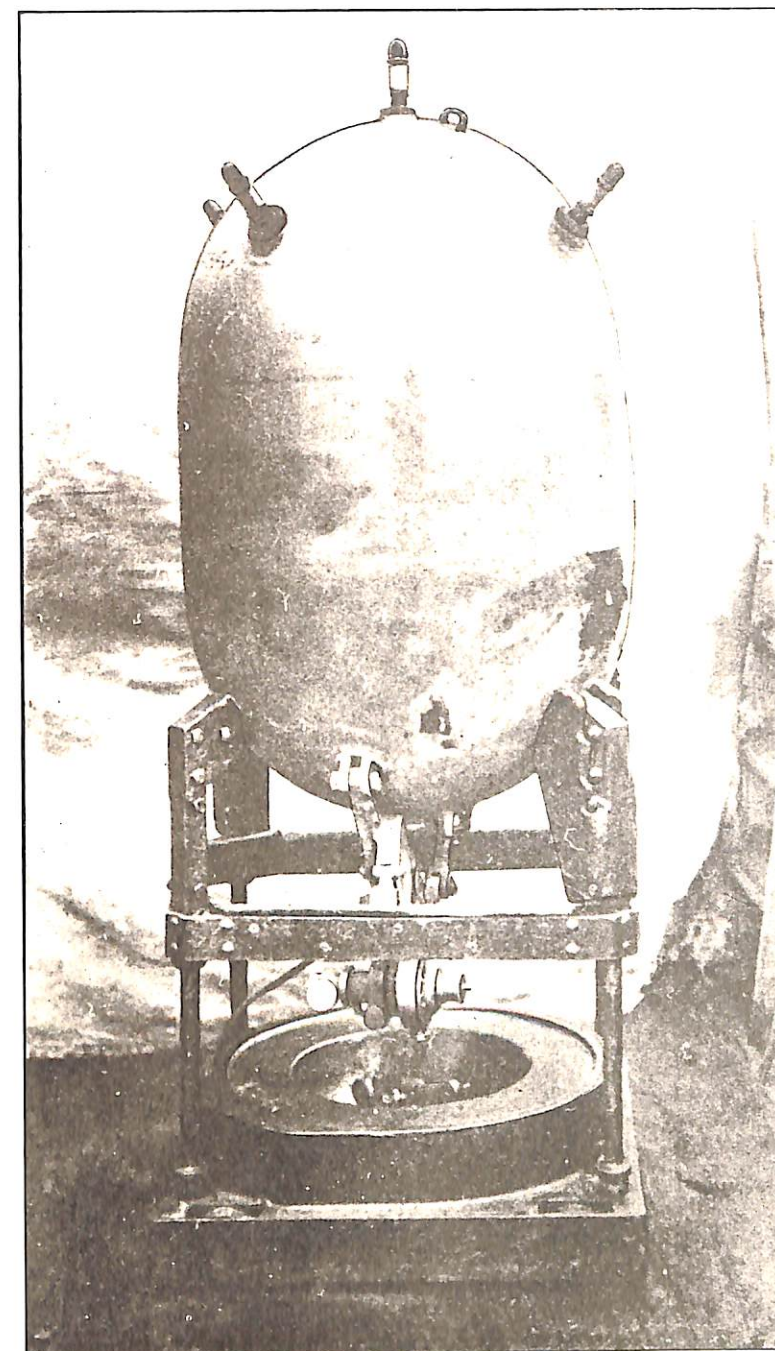




NOTE THE DANGEROUS HORNS ON TOP OF MINE.

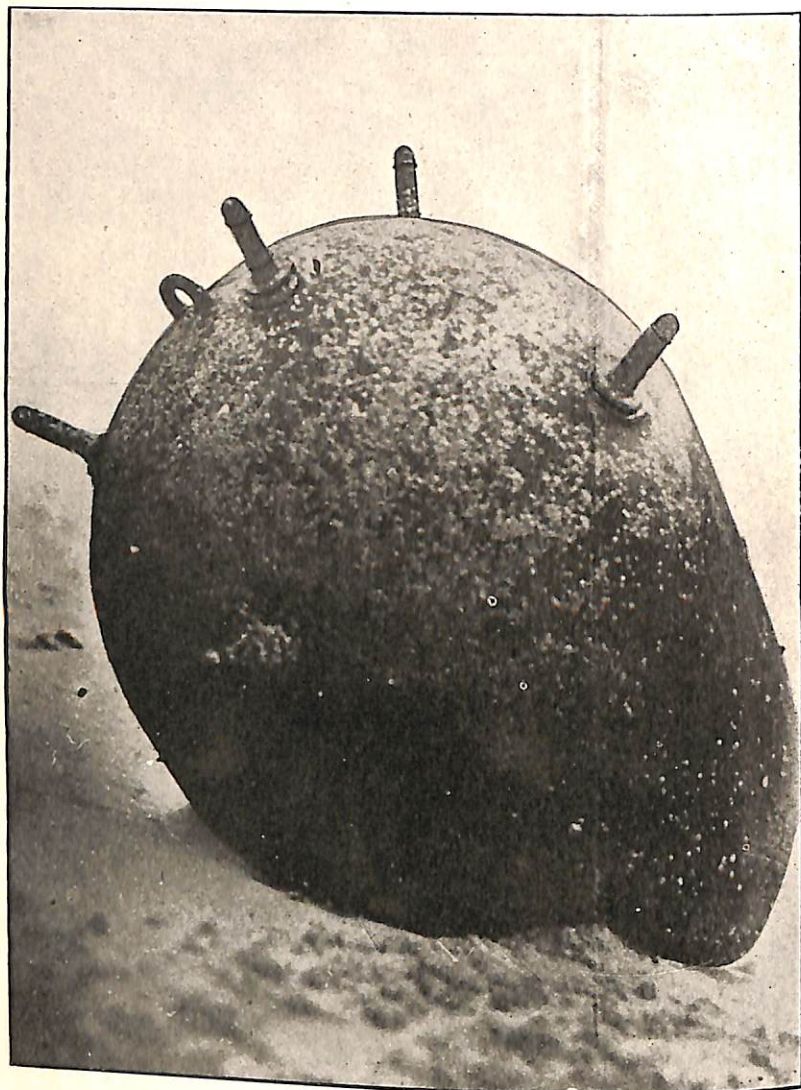


NOTE THE DANGEROUS HORNS ON TOP OF MINE.



GERMAN MINE WITH TOWING



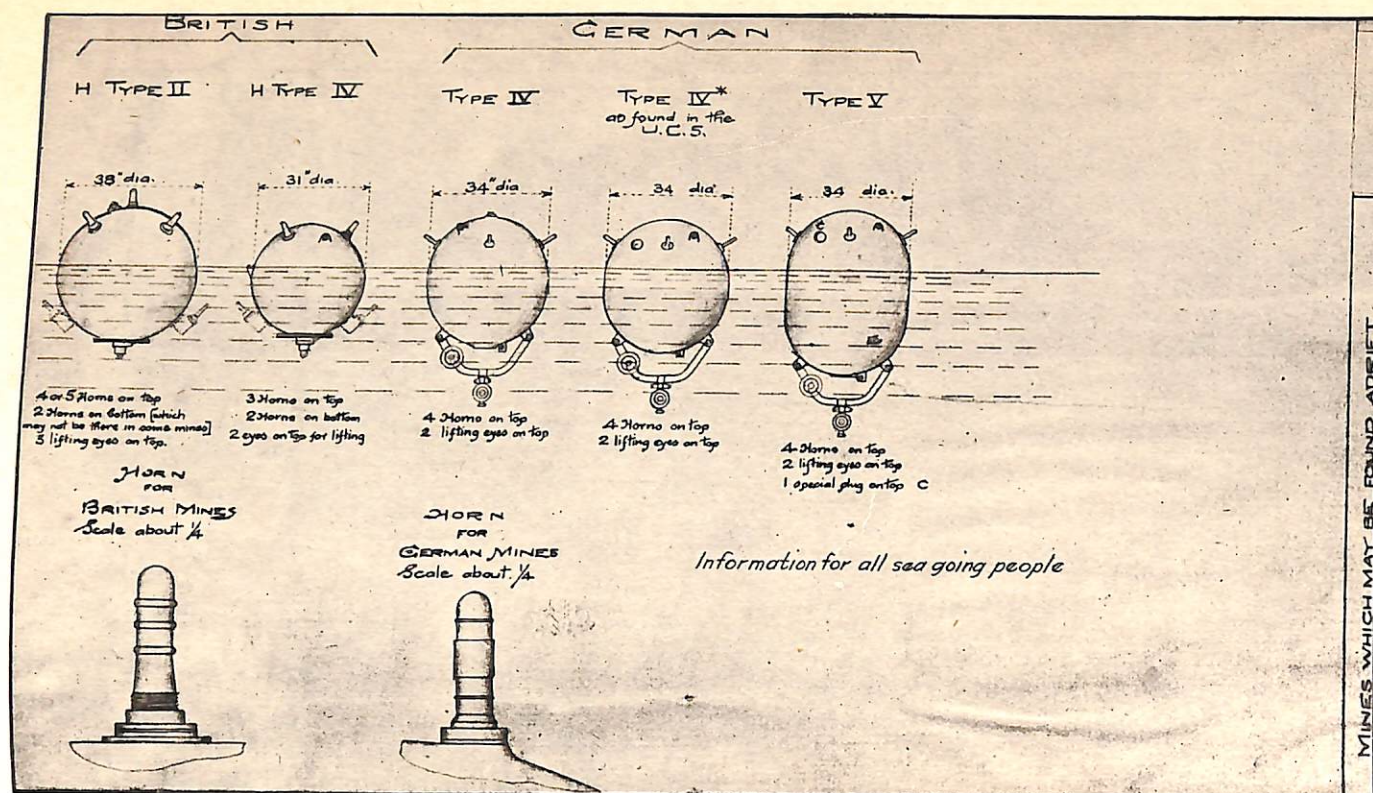


A GERMAN MINE WASHED ASHORE.

Information for all sea going people

GERMAN MINE		SYMBOLS AND SIGNS USED BY THE ENEMY	
German	31	31	31
German	32	32	32
German	33	33	33
German	34	34	34
German	35	35	35
German	36	36	36
German	37	37	37
German	38	38	38
German	39	39	39
German	40	40	40
German	41	41	41
German	42	42	42
German	43	43	43
German	44	44	44
German	45	45	45
German	46	46	46
German	47	47	47
German	48	48	48
German	49	49	49
German	50	50	50
German	51	51	51
German	52	52	52
German	53	53	53
German	54	54	54
German	55	55	55
German	56	56	56
German	57	57	57
German	58	58	58
German	59	59	59
German	60	60	60
German	61	61	61
German	62	62	62
German	63	63	63
German	64	64	64
German	65	65	65
German	66	66	66
German	67	67	67
German	68	68	68
German	69	69	69
German	70	70	70
German	71	71	71
German	72	72	72
German	73	73	73
German	74	74	74
German	75	75	75
German	76	76	76
German	77	77	77
German	78	78	78
German	79	79	79
German	80	80	80
German	81	81	81
German	82	82	82
German	83	83	83
German	84	84	84
German	85	85	85
German	86	86	86
German	87	87	87
German	88	88	88
German	89	89	89
German	90	90	90
German	91	91	91
German	92	92	92
German	93	93	93
German	94	94	94
German	95	95	95
German	96	96	96
German	97	97	97
German	98	98	98
German	99	99	99
German	100	100	100

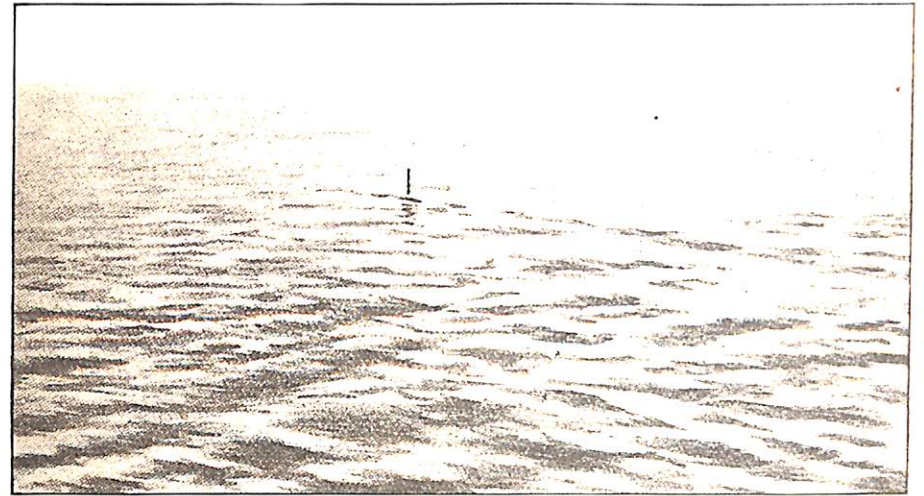




MINES WHICH MAY BE FOUND ADRIET.

German Submarines.



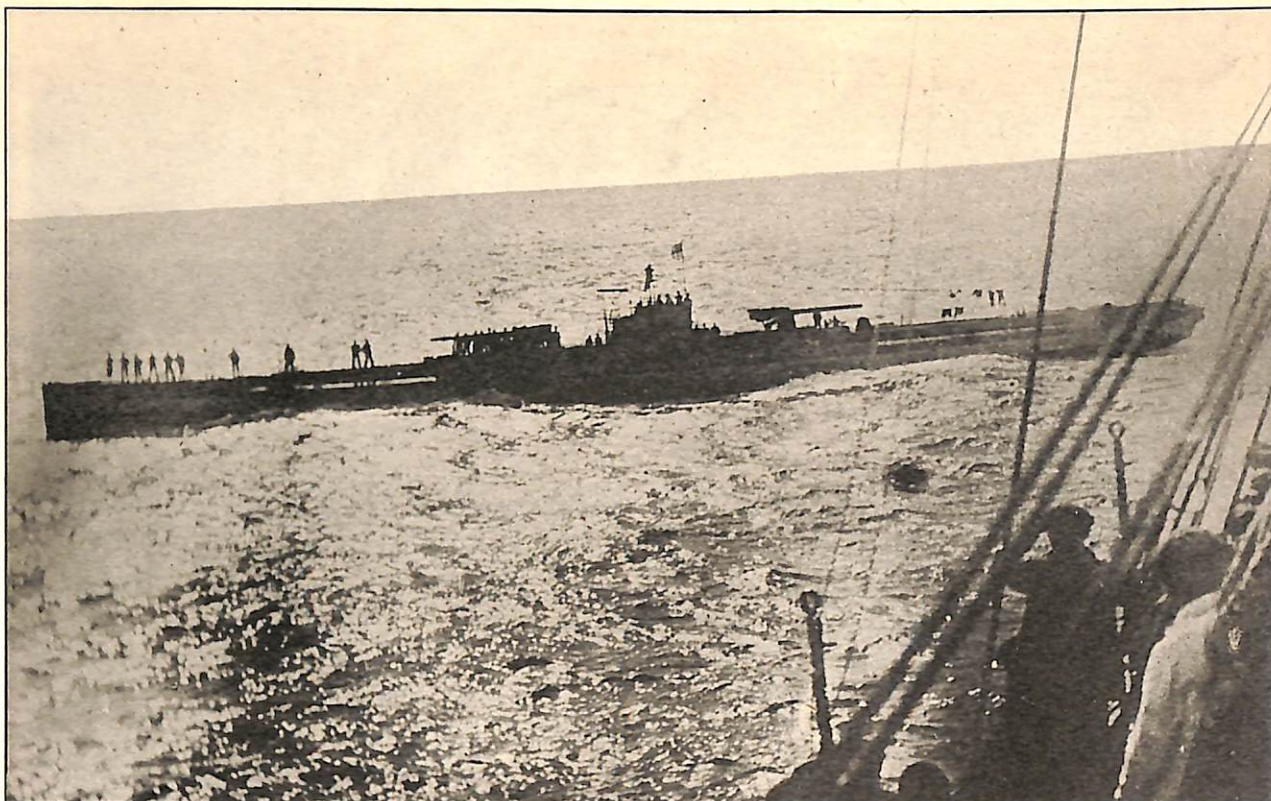


PERISCOPE MOVING SLOWLY THROUGH WATER THE LIGHT BEING NEARLY  
OF IT.

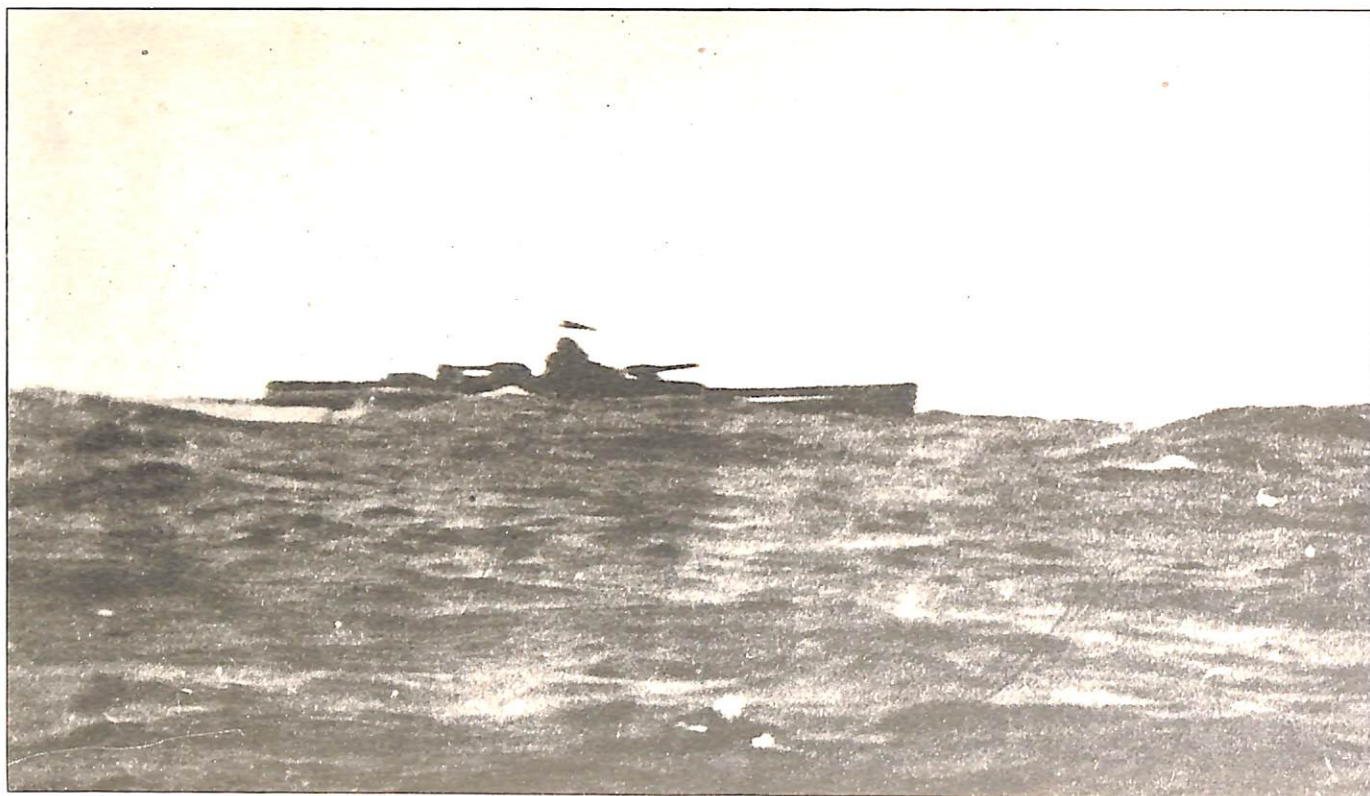


PERISCOPE MOVING SLOWLY THROUGH WATER THE LIGHT BEING NEARLY  
OF IT.

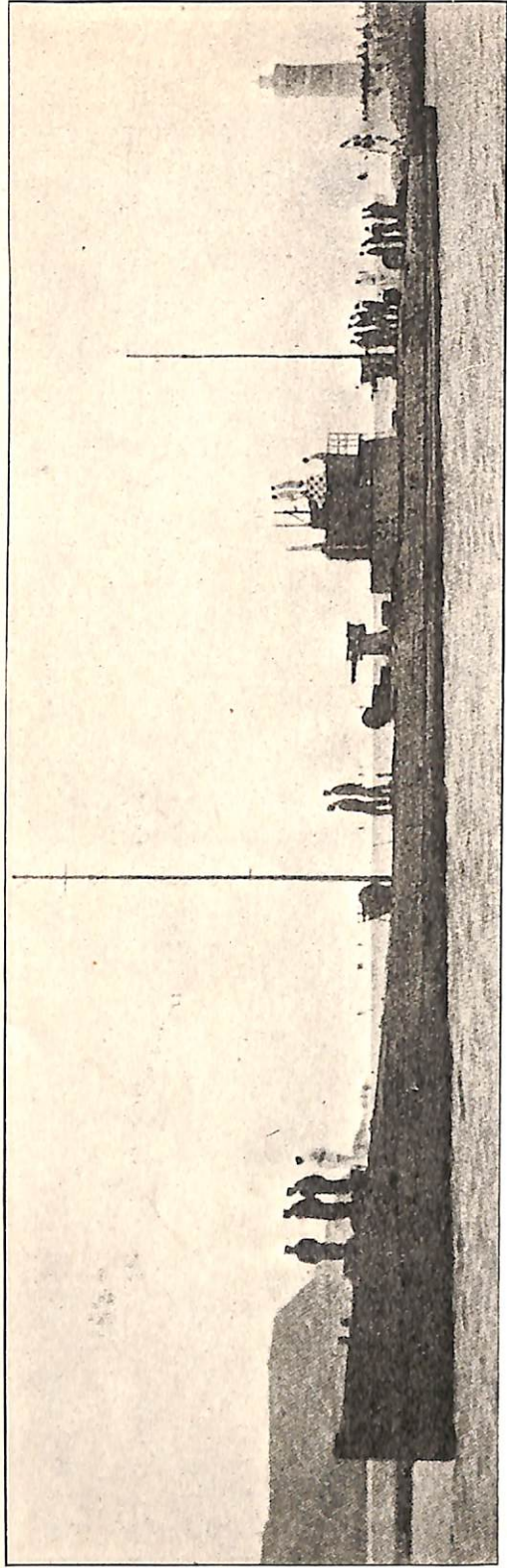




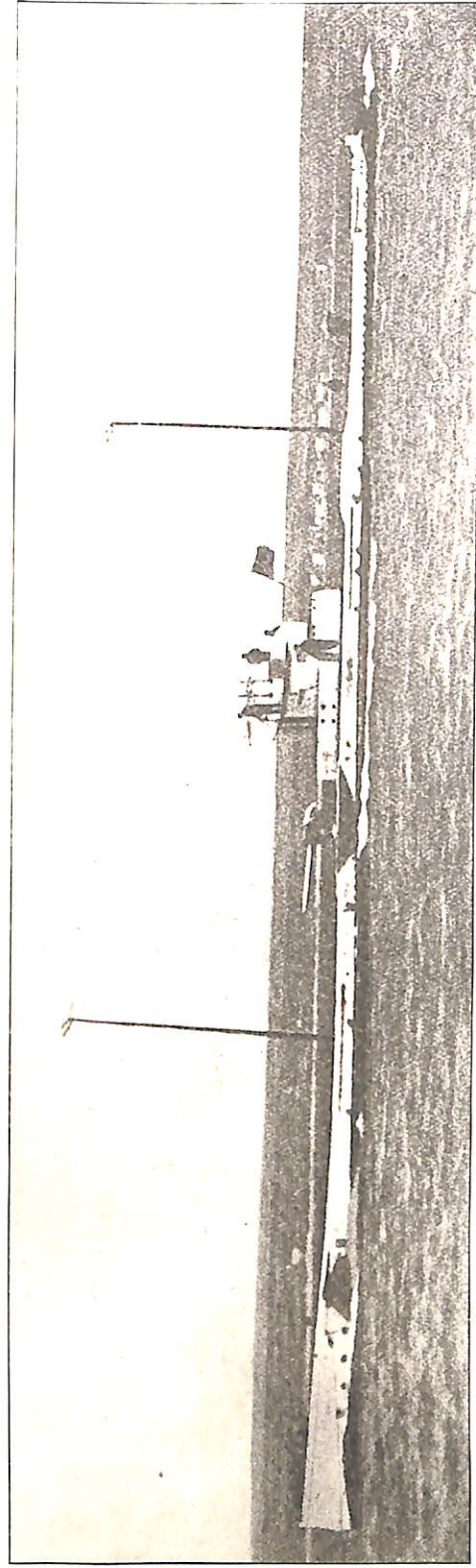
PHOTOGRAPH MADE IN FEBRUARY, 1918, OF A LARGE GERMAN SUBMARINE OVERHAULING AND STOPPING A PASSENGER STEAMER  
 Note two 6-inch guns. There are also four smaller guns.





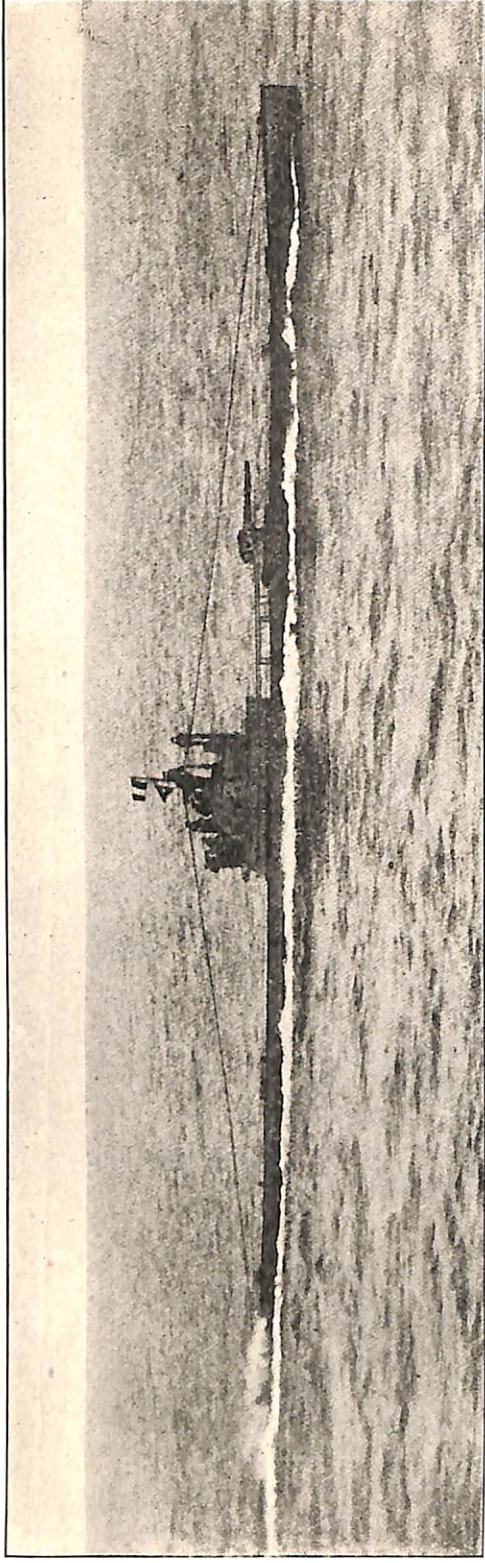


EARLIER GERMAN OCEAN-GOING SUBMARINE WITH TWO 22 PR. GUNS (MASTS UP).

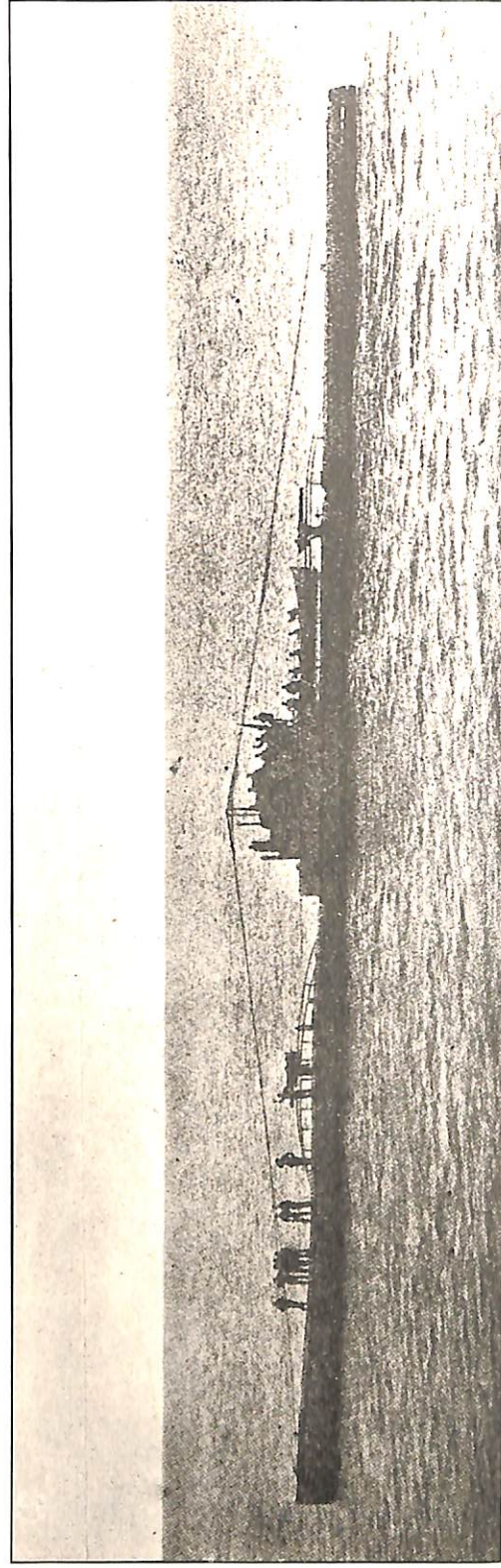


LATER GERMAN OCEAN-GOING SUBMARINE WITH TWO 22 PR. GUNS (MASTS DOWN).



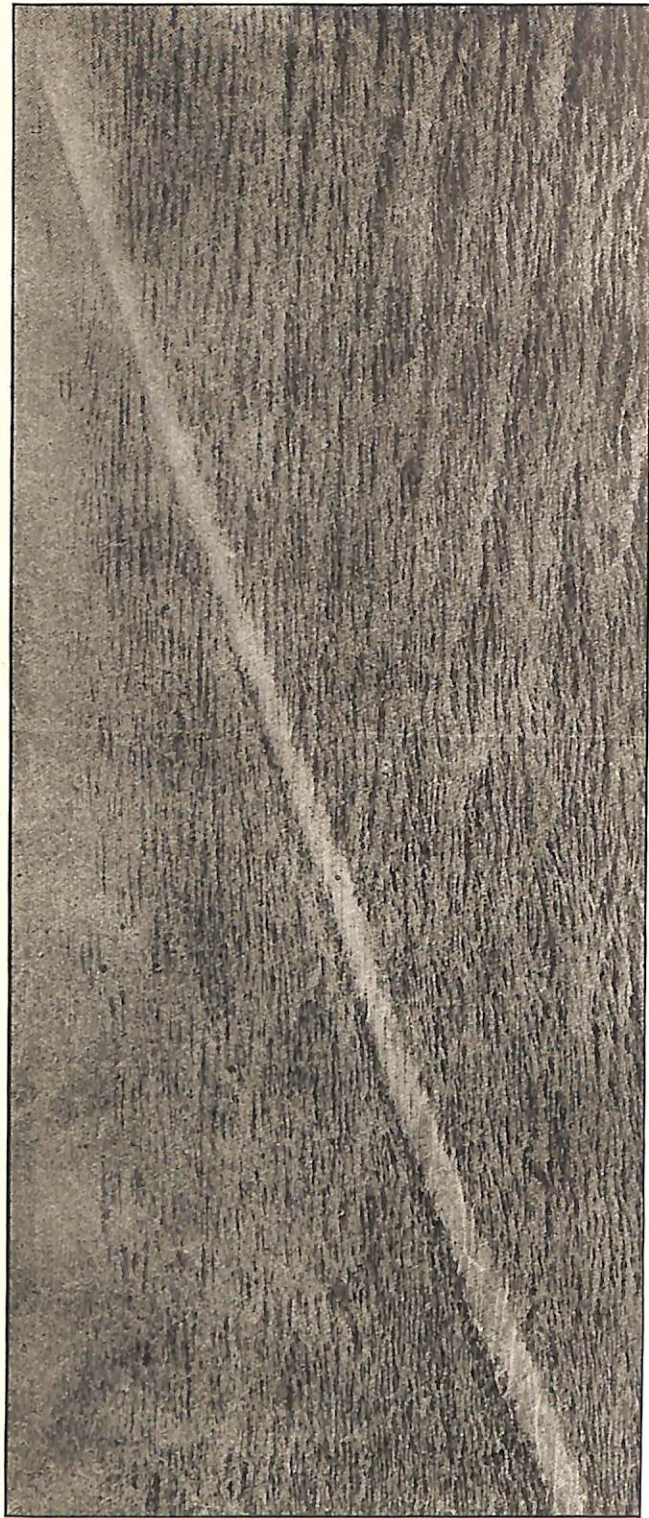


LATER OCEAN-GOING GERMAN SUBMARINE WITH ONE 4.1-INCH GUN (MASTS DOWN).



LATER GERMAN OCEAN-GOING SUBMARINE WITH TWO 4.1-INCH GUNS (MASTS DOWN).





TRACK OF TORPEDO.



TORPEDO FLOATING ON THE SURFACE.