

1906

NIS MISSION

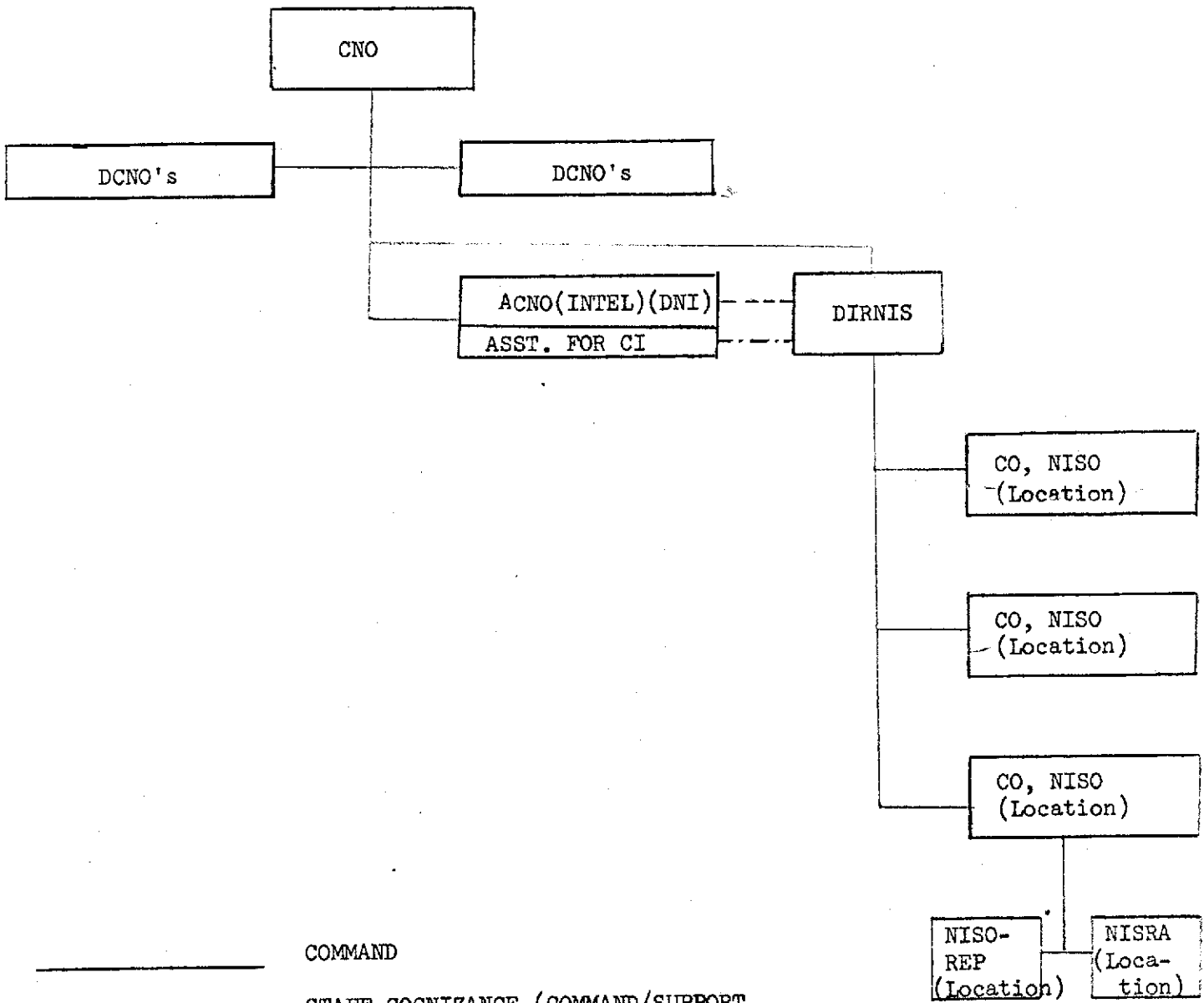
Under the Director of Naval Intelligence, to maintain, command, and operate a world-wide organization to fulfill the investigative and counterintelligence responsibilities of the Department of the Navy (less those combat-related counterintelligence matters within the functional responsibilities of the Marine Corps.)

UNCLASSIFIED

CHART 1

DECLASSIFIED

Authority NND 73643



_____ COMMAND
 - - - - - STAFF COGNIZANCE (COMMAND/SUPPORT)
 - . - . - . ADDU

UNCLASSIFIED

CHART 2

UNCLASSIFIED

~~CONFIDENTIAL~~

NIS Personnel Distribution (June, 1966)

	<u>Officers</u>	<u>Enlisted</u>	<u>Civil Service</u>	<u>Agents</u>	<u>Total</u>
Naval District NISO's and NISHQ	97	216	672	805	1,790
NISO's, Foreign	<u>23</u>	<u>65</u>	<u>18</u>	<u>95</u>	<u>201</u>
TOTAL	120	281	690	900	1,991

Declassified / Downgrade to

Auth: EO 12958

Date: 11/sep 58

Unit: NCF 22

UNCLASSIFIED

~~CONFIDENTIAL~~

CHART 3

DECLASSIFIED Authority <u>NND 73643</u>
--

NIS Personnel Utilization by Operating Function

Calendar 1966

<u>Function</u>	<u>% Personnel Utilization</u>	<u>1/</u>
Counterintelligence	8.76	
Intelligence	3.01	2/
Miscellaneous	3.14	2/
Investigations	<u>85.09</u>	
	100.00	

UNCLASSIFIED

1/ Includes attributed Administrative Overhead

2/ Functions phased out during year

..... Date: 83814
 NIS 22

..... Auth: 5018958

..... Declassified / Downgrade to

CHART 4

~~CONFIDENTIAL~~
CONFIDENTIAL

MAJOR INVESTIGATIVE RESPONSIBILITIES

Personnel Security

Naval/Marine Personnel
Civilian Employees - Navy
Industrial Employees

UNCLASSIFIED

Sabotage, Espionage, Subversion

Naval/Marine Personnel

Security -

Unauthorized disclosures
Information Compromises

UNCLASSIFIED

Criminal -

Offenses against property
Offenses against persons

Special -

Protective Services
Technical Surveys

CHART 5

INVESTIGATIVE GROWTH TREND

<u>FY</u>	<u>CASES</u>
1963	48,100
1964	56,000
1965	55,000
1966	61,800
1967	65,150*

*Extrapolated from 1st 11 months.

UNCLASSIFIED

CHART 6

INVESTIGATIVE TREND BY CATEGORY

<u>FY</u>	<u>CASES PER MAJOR CATEGORY</u>			
	<u>BI's</u>	<u>CRIM.</u>	<u>OTHERS</u>	<u>TOTAL</u>
*1967	44,700	9,200	12,250	66,150
1966	39,600	8,400	13,800	61,800

*Extrapolated

UNCLASSIFIED

CHART 7

CI PRODUCTION ITEMS

Monthly CIB's

Spot Reports

Port CI Reports

Foreign Navy Intelligence

NIE's

Special Studies

UNCLASSIFIED

CHART 8