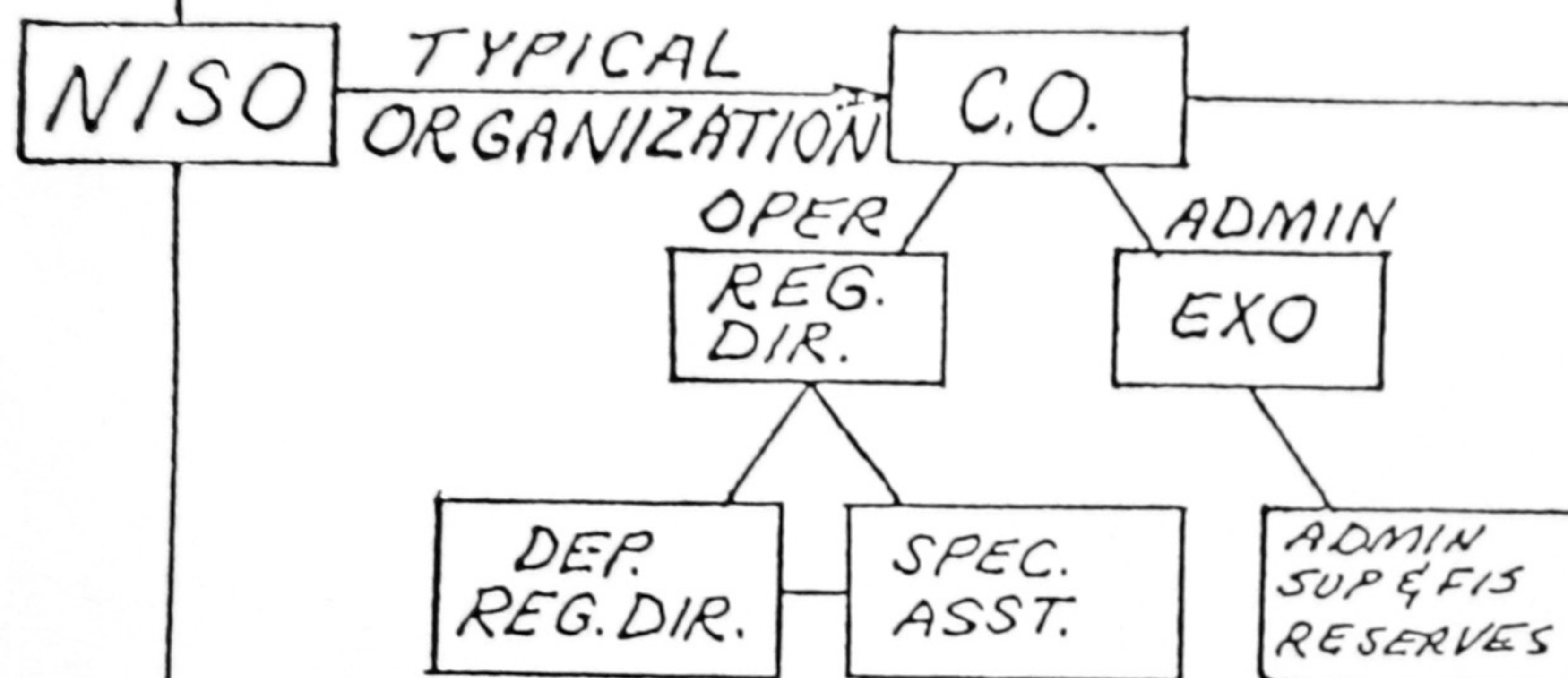


CHAIN  
NISHQ See NISHQ org. chart

# NIS FIELD ORGANIZATION



## TYPICAL RELATIONSHIPS

### NISHQ/NISO

DIRECTOR --- C.O.

DEPUTY DIRECTOR --- REG. DIRECTOR

DEPT. HD. (ADMIN) --- EXO/REG. DIRECTOR

OTHER DEPT. HDS --- REG. DIRECTOR

ASST. DEPT. HD. --- DEP. REG. DIRECTOR

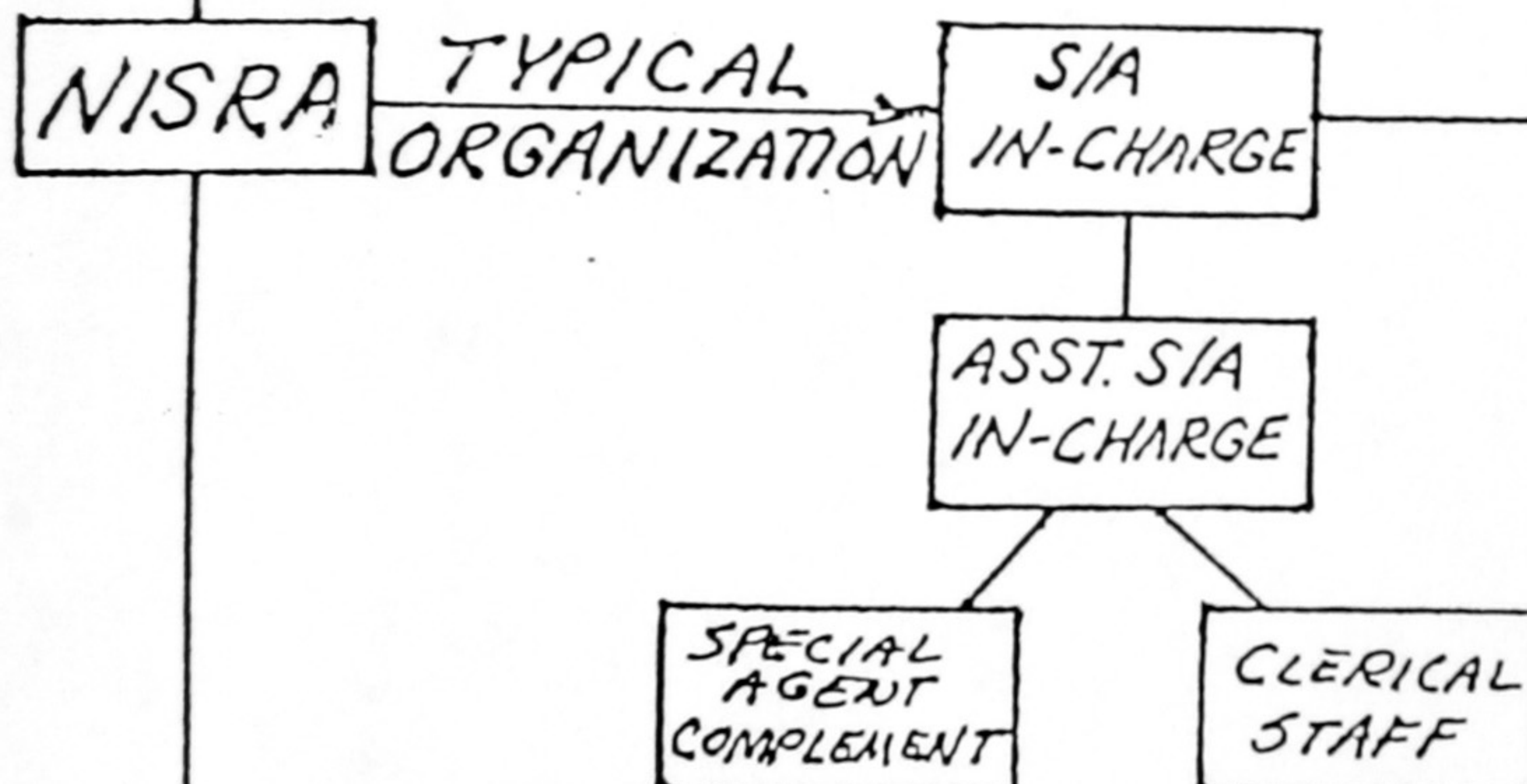
DIV./BR. HD. --- DEP. REG. DIR./SPEC. ASST

## NAVAL INVESTIGATIVE SERVICE OFFICES

10 NISOs LOCATED AT:

NEW YORK, NY  
NORFOLK, VA  
CHARLESTON, SC  
NEW ORLEANS, LA  
SAN DIEGO, CA  
SAN FRANCISCO, CA  
LONDON, UK  
HONOLULU, HI  
YOKOSUKA, JA  
SUBIC BAY, RP

EACH NISO HAS NIS JURISDICTION OVER A LARGE, DEFINED GEOGRAPHIC LAND/SEA AREA



## TYPICAL RELATIONSHIPS

### NISO/NISRA

SPECIAL AGENTS-IN-CHARGE AND ASSISTANTS ARE DIRECTLY RESPONSIBLE TO THE NISO C.O., VIA THEIR REGIONAL DIRECTOR AND DEPUTY REGIONAL DIRECTOR.

## NAVAL INVESTIGATIVE SERVICE RESIDENT AGENCIES

APPROXIMATELY 70 RESIDENT AGENCIES LOCATED AT MAJOR NAVY/USMC INSTALLATIONS, WORLDWIDE. EACH IS SUBORDINATE TO A PARENT NISO HAVING JURISDICTION OVER THEIR RESPECTIVE GEOGRAPHIC AREA, AND IS RESPONSIBLE FOR PROVIDING INVESTIGATIVE AND COUNTERINTELLIGENCE SUPPORT TO COMMANDS WITHIN THEIR GEOGRAPHIC TERRITORY. NISRAs ARE THE PRIMARY OPERATIONAL FIELD COMPONENTS OF NIS, AND EACH IS AUTONOMOUS IN THAT IT HAS A DESIGNATED SUPERVISOR (SPECIAL AGENT-IN-CHARGE or SAC), CLERICAL SUPPORT AND AUTOVON TELETYPE COMMUNICATIONS

**NISRU** → APPROXIMATELY 60/65 NAVAL INVESTIGATIVE SERVICE RESIDENT UNITS, COMPOSED OF 1-2 SPECIAL AGENTS, ARE LOCATED AT RELATIVELY SMALL NAVY/USMC ACTIVITIES (NEARBY OR REMOTE TO THEIR PARENT NISRA) OR AFLOAT (ABOARD AIRCRAFT CARRIERS/FLEET FLAGSHIPS). EACH NISRU DERIVES ITS SUPERVISORY, ADMINISTRATIVE, CLERICAL AND COMMUNICATIONS SUPPORT FROM ITS PARENT NISRA, WITH THE EXCEPTION THAT AFLOAT NISRUs ARE PROVIDED ESSENTIAL CLERICAL/COMMUNICATIONS SUPPORT ABOARD SHIP. AFLOAT NISRUs ARE ADMINISTRATIVELY AND OPERATIONALLY ATTACHED TO CONUS NISRAs EXCEPT WHEN THE SHIP IS DEPLOYED ABROAD: IN THE LATTER INSTANCE, THE NISRU IS OPERATIONALLY ASSIGNED TO THE APPROPRIATE OVERSEAS NISRA.